

Aquatic Plants of MESSER POND



State Contact:
Amy P. Smagula
Limnologist/Exotic Aquatic Plant Program Coordinator
603-271-2248 or Amy.Smagula@des.nh.gov

Overview

- This slideshow includes four sections aimed at helping you effectively Weed Watch on your waterbody:
 - The first section shows photos of NATIVE aquatic plants that have been documented in your waterbody to date. Learn these and ignore them! *They are fine.*
 - The second section shows photos of algae you may encounter during your survey. Some are good, some are of concern.
 - The third section shows photos of INVASIVE aquatic plants you do not want in your waterbody. *Search for these and report immediately!*
 - The final section shows photos of INVASIVE aquatic animals you do not want in your waterbody. *Search for these and report immediately!*

Types of Aquatic Plants

Emergent



Submergent



Floating



Algae





Plant Refresher

Native plants of

MESSER POND



Floating-leaved plants

- Includes both rooted and unrooted here



Yellow water lily

White water lily





Water shield

Floating heart





Emergent plants

- Plants that are rooted and have most of their biomass as erect vegetation above the water



Arrowhead

Bur-reed





Pipewort

Spike rush



Water Lobelia





Pickerelweed



Three-way sedge

Swamp Loosestrife



Cotton Grass





Submergent plants

- Rooted or unrooted
- Vegetative portion wholly underwater
- Flowers may be emergent

Native Milfoil

Myriophyllum humile (reddish/brownish stems, usually 6 inches tall or less)



Bladderwort





Pondweed

Waterweed

schmalblättrige Wasserpest (*Elodea nuttallii*)

Tape grass



Algae


(also important to look at)



- Single celled to colonial
- Simple plants
- Base of the food chain



Green algae = OK

A photograph showing a shoreline with a dark, pebbly beach on the left and a body of water on the right. A distinct, greenish, foamy scum of cyanobacteria is visible at the water's surface, extending from the shore into the water. The water further out is a clear blue. A white speech bubble with a black border is positioned over the greenish scum, containing text. In the bottom left corner, there is a large, bold, italicized text overlay.

Cyanobacteria often form scums at the surface. Scums often wash up close to shore due to wind or water current. Scums can be greenish, blue-greenish or bluish.

***Cyanobacteria (Blue-green algae)-
Call us! These could produce toxins.***



The Exotic Plants

(aka- plants you don't want)

Use these pictures to help you identify any new growth that may come in.

Report any sightings of these to:

Amy P. Smagula

NH DES

29 Hazen Drive

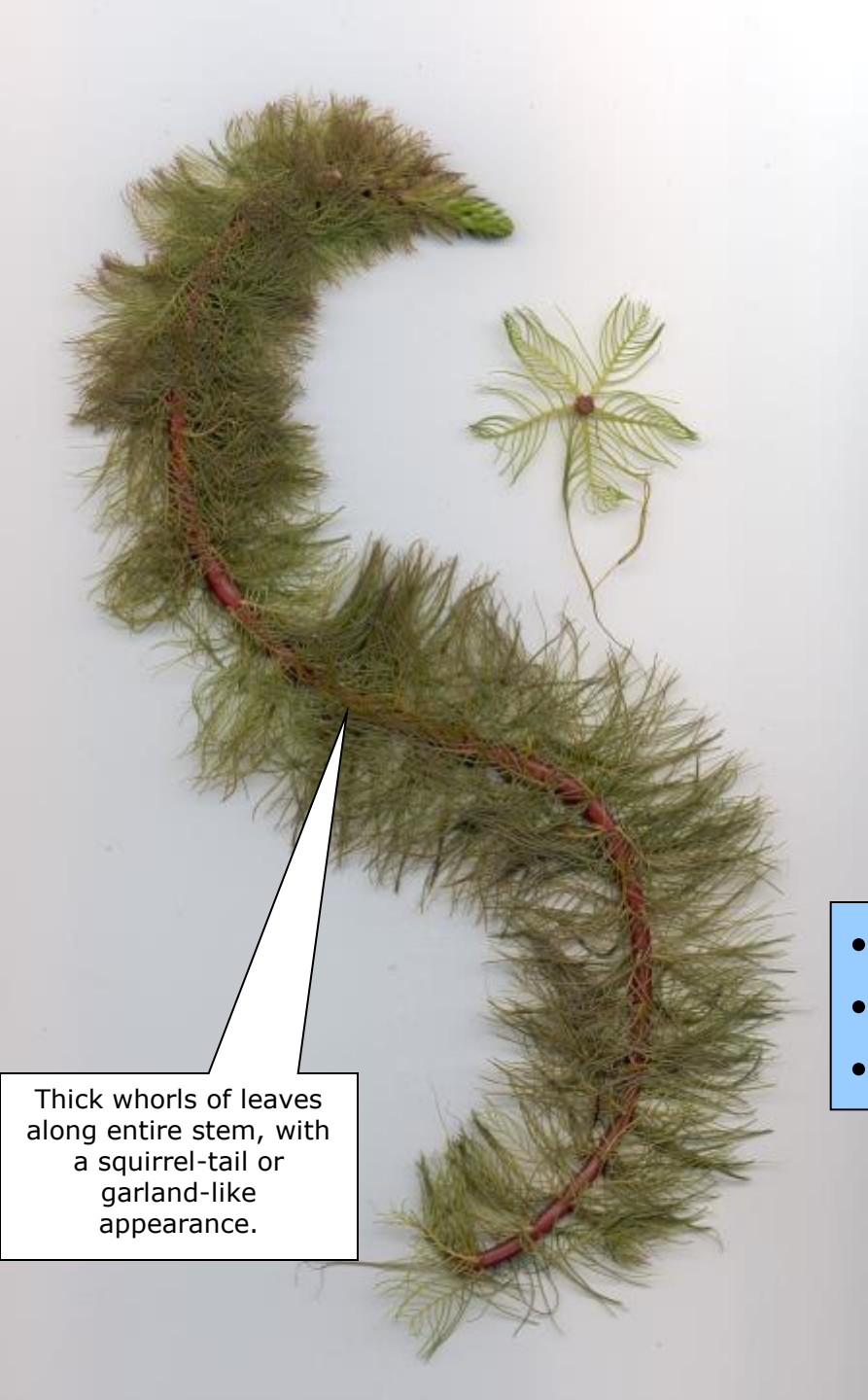
Concord, NH 03301

Amy.Smagula@des.nh.gov

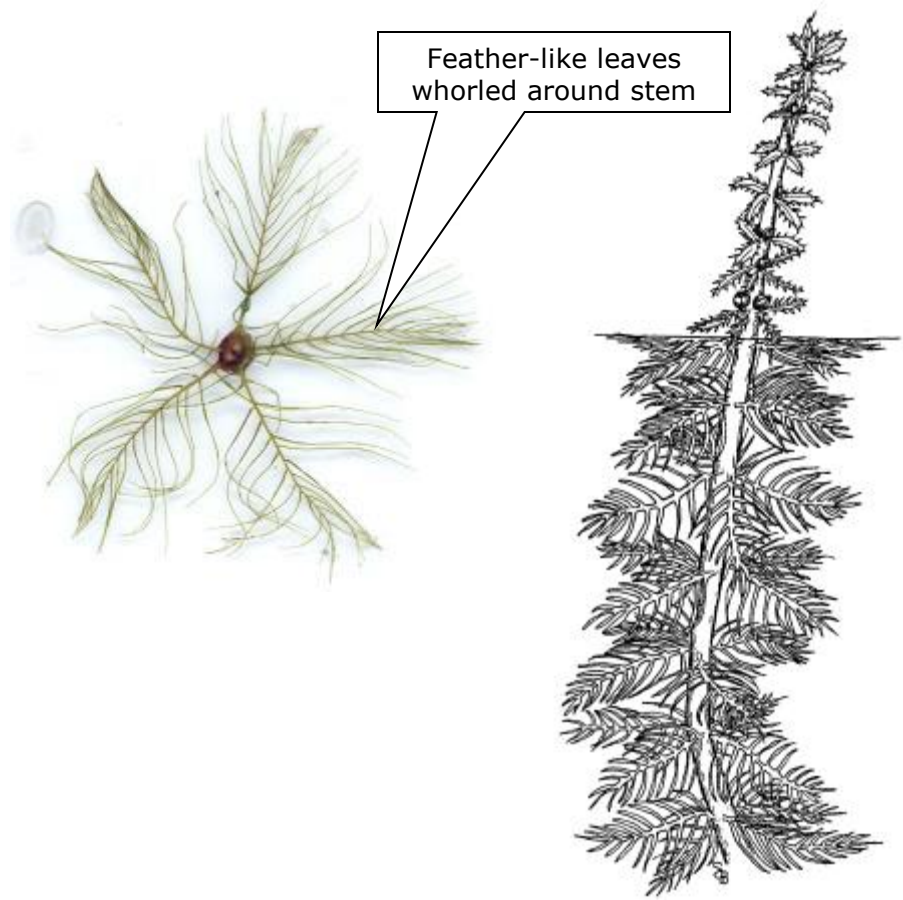
603-271-2248



Variable milfoil (EXOTIC)



Thick whorls of leaves along entire stem, with a squirrel-tail or garland-like appearance.



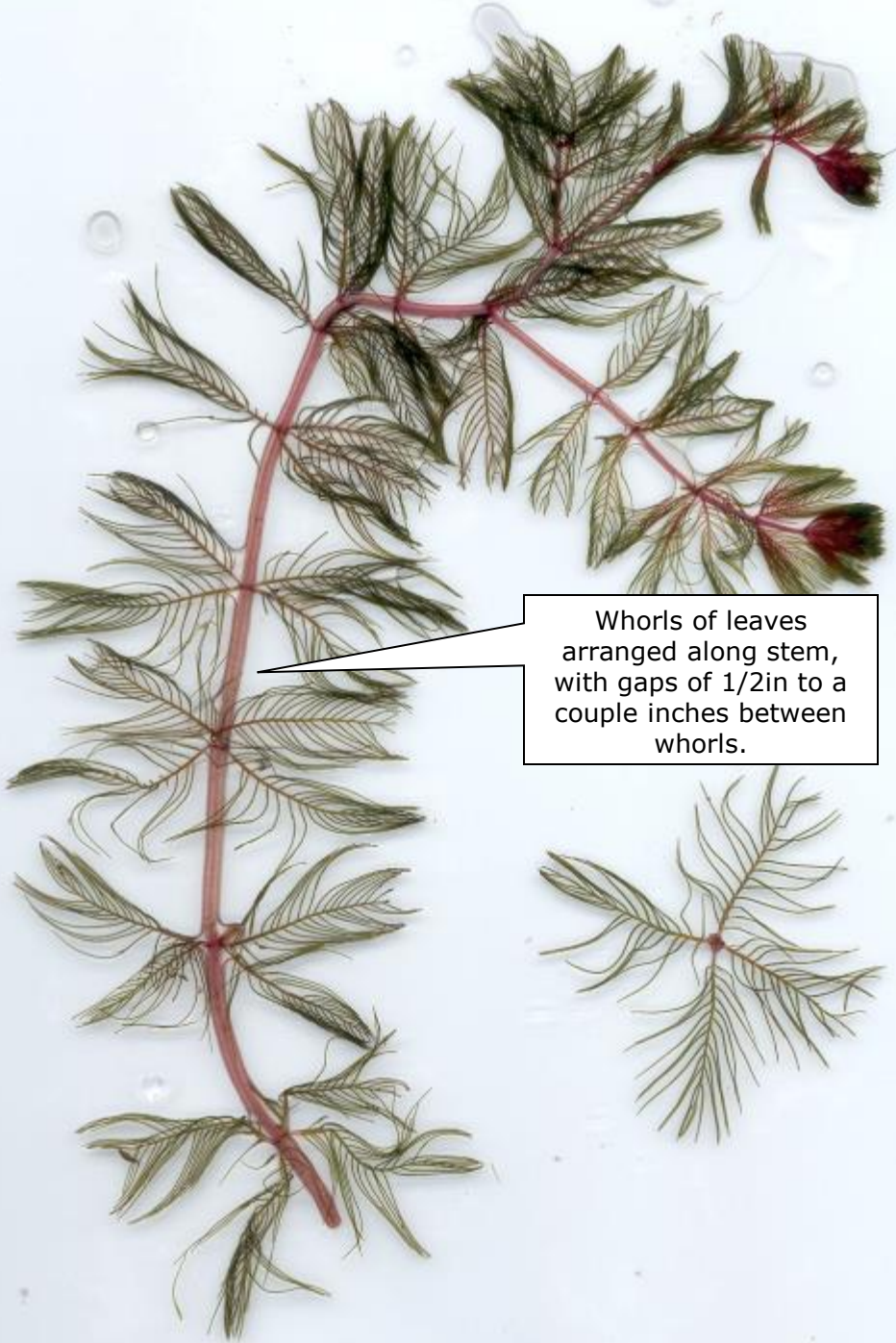
- Variable milfoil- *Myriophyllum heterophyllum*
- Native to southern and central U.S., not to NH
- In several waterbodies in NH

A photograph of a Variable milfoil flower stem. The stem is reddish-brown and arches from the bottom left towards the top right. It has small, green, lanceolate leaves arranged in whorls. At the tip of the stem, there are several small, yellowish flowers. The background is a bright blue, textured surface, possibly a tarp or fabric, with some water droplets visible. A shadow of the stem is cast onto the blue background.

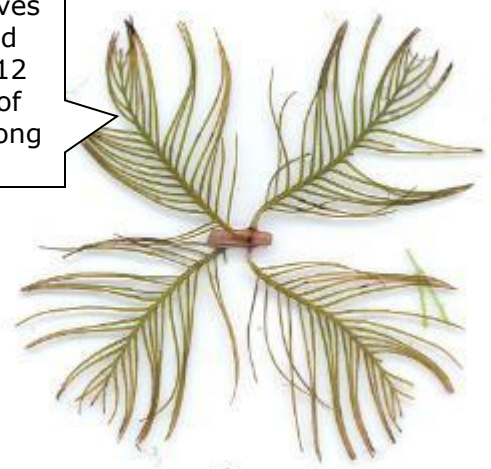
Variable milfoil flower



Eurasian milfoil (EXOTIC)

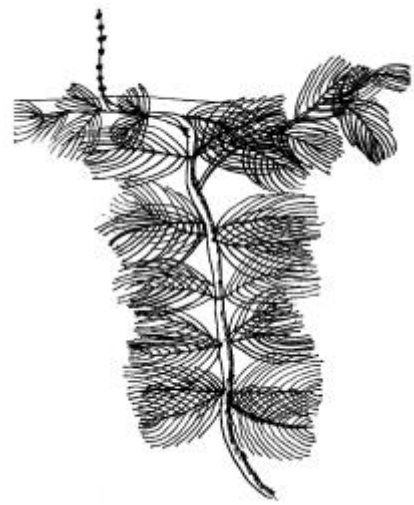


Feather-like leaves whorled around stem, at least 12 or more pairs of small leaflets along one leaf



Whorls of leaves arranged along stem, with gaps of 1/2in to a couple inches between whorls.

- Eurasian milfoil- *Myriophyllum spicatum*
- Native to Asia
- In 5 waterbodies in NH

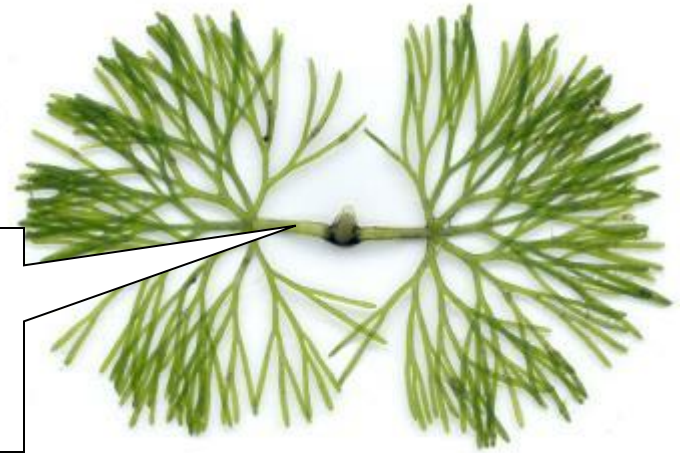




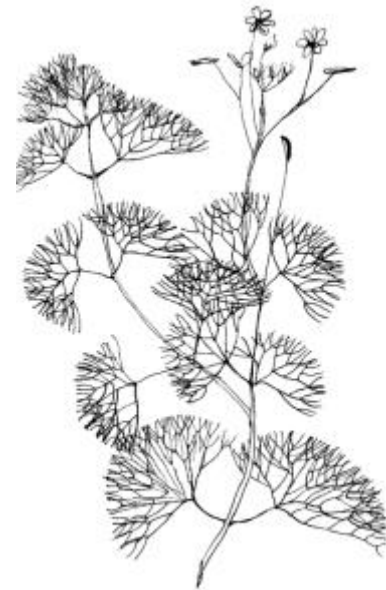
Fanwort (EXOTIC)



Branching leaves arranged opposite along stem. Note leaf is attached by a short stem to main stem of plant.



- Fanwort- *Cabomba caroliniana*
- Native to Europe/Asia
- In 9 waterbodies in NH



A photograph of a Hydrilla plant specimen, showing several upright, green stems with small, narrow leaves. The stems are arranged in a cluster, and the background is a light blue gradient. The text 'Hydrilla (EXOTIC)' is overlaid in the bottom left corner.

Hydrilla (EXOTIC)



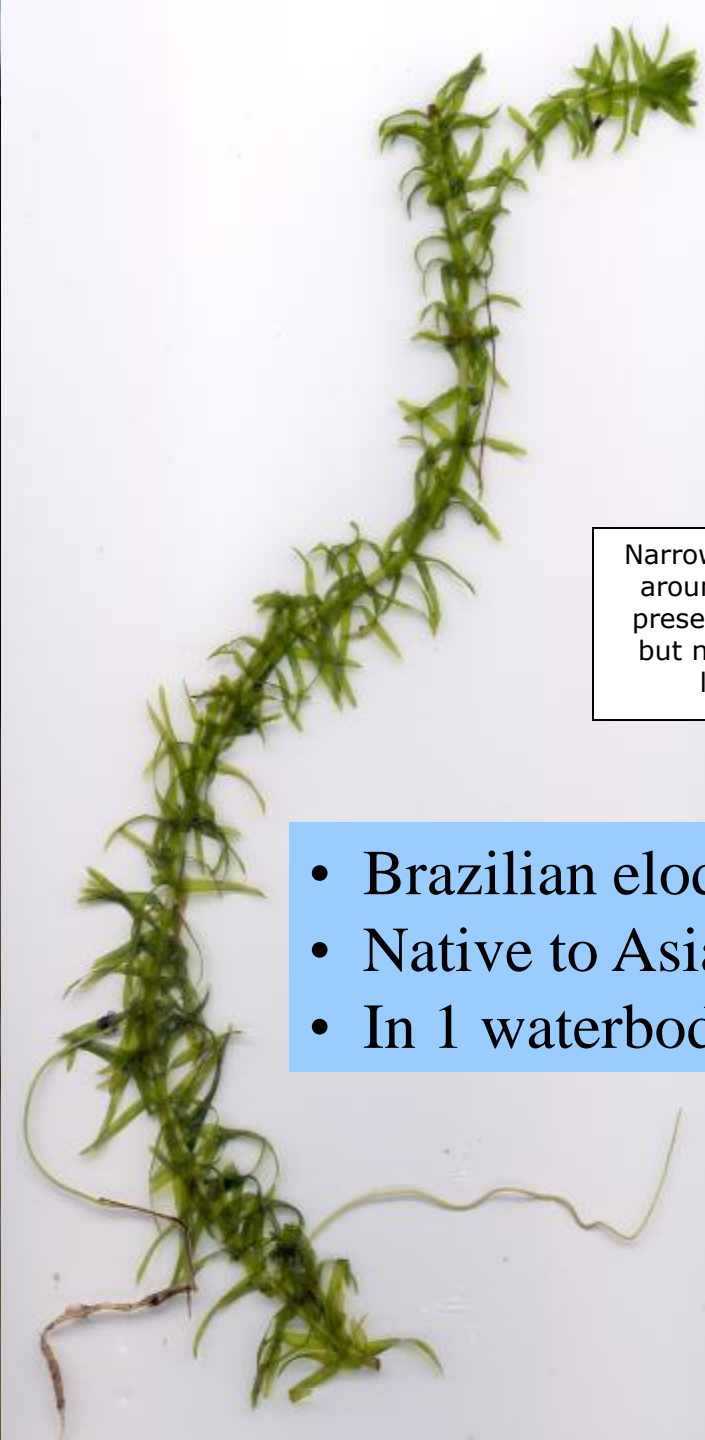
Small narrow leaves whorled around stem. Note teeth on leaf edge for hydrilla.



- Hydrilla- *Hydrilla verticillata*
- Native to South America
- Not yet found in NH (but found in MA and ME)



Brazilian elodea (EXOTIC)

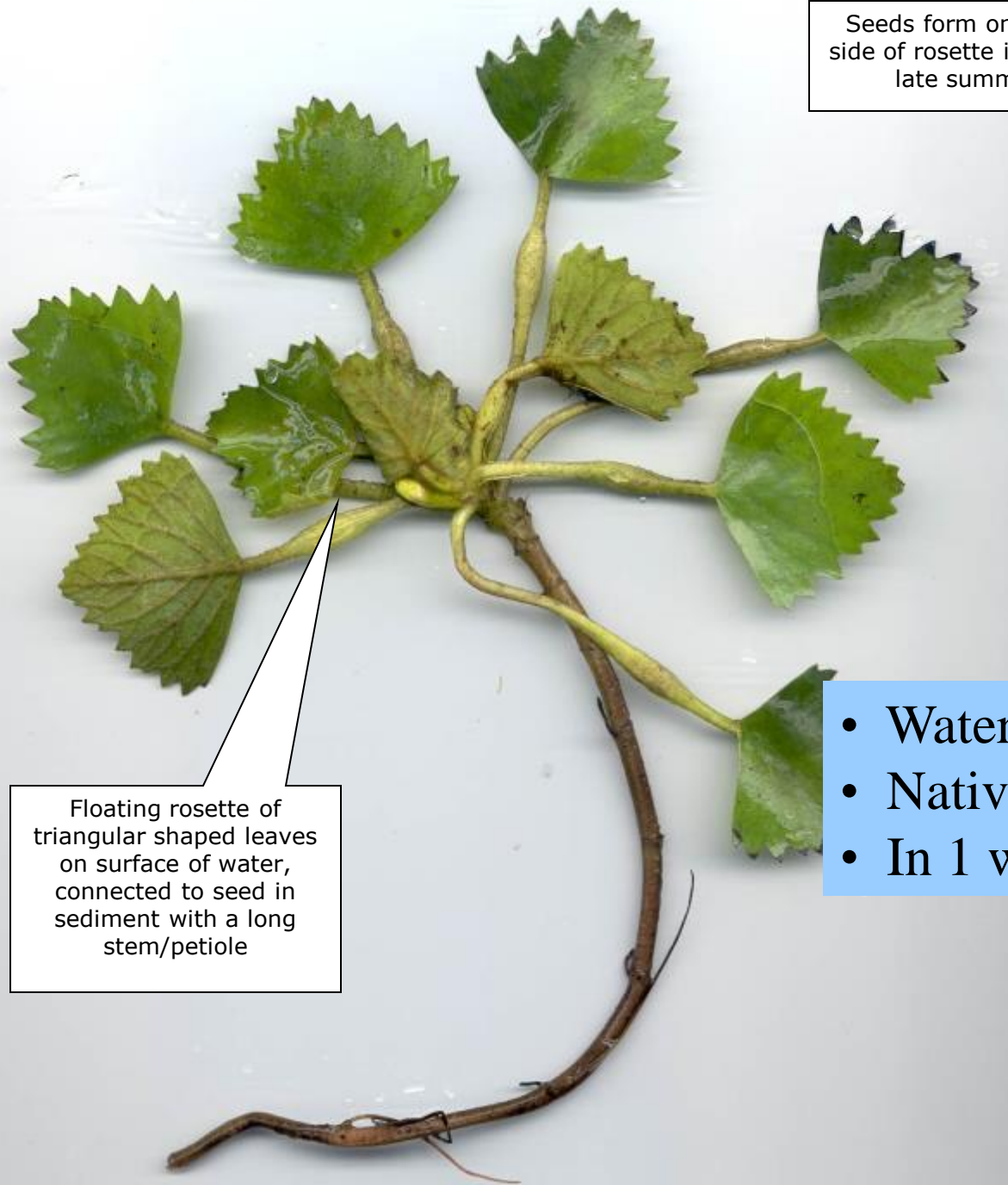


Narrow leaves whorled around stem. Teeth present on leaf edges but need magnifying lens to see.

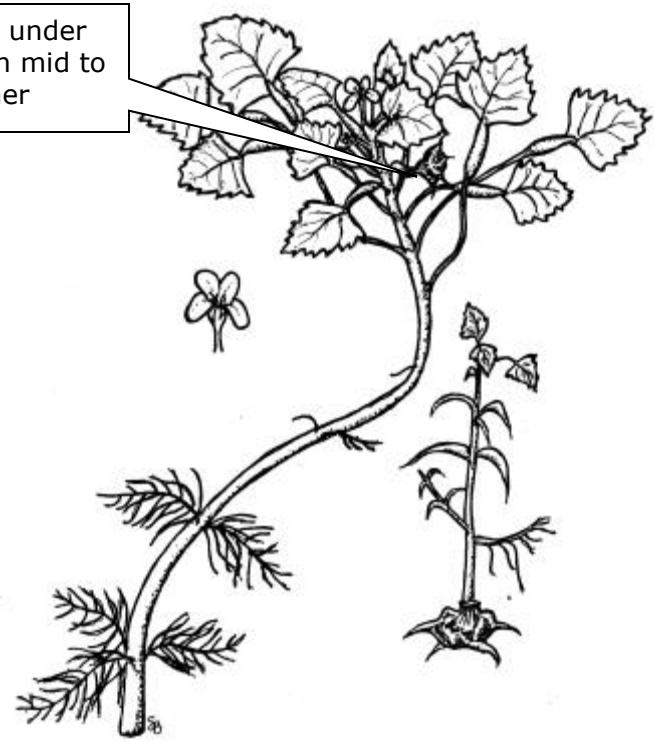
- Brazilian elodea- *Egeria densa*
- Native to Asia and South America
- In 1 waterbody in NH



Water chestnut- EXOTIC



Seeds form on under side of rosette in mid to late summer



Floating rosette of triangular shaped leaves on surface of water, connected to seed in sediment with a long stem/petiole

- Water chestnut- *Trapa natans*
- Native to Asia
- In 1 waterbody in NH

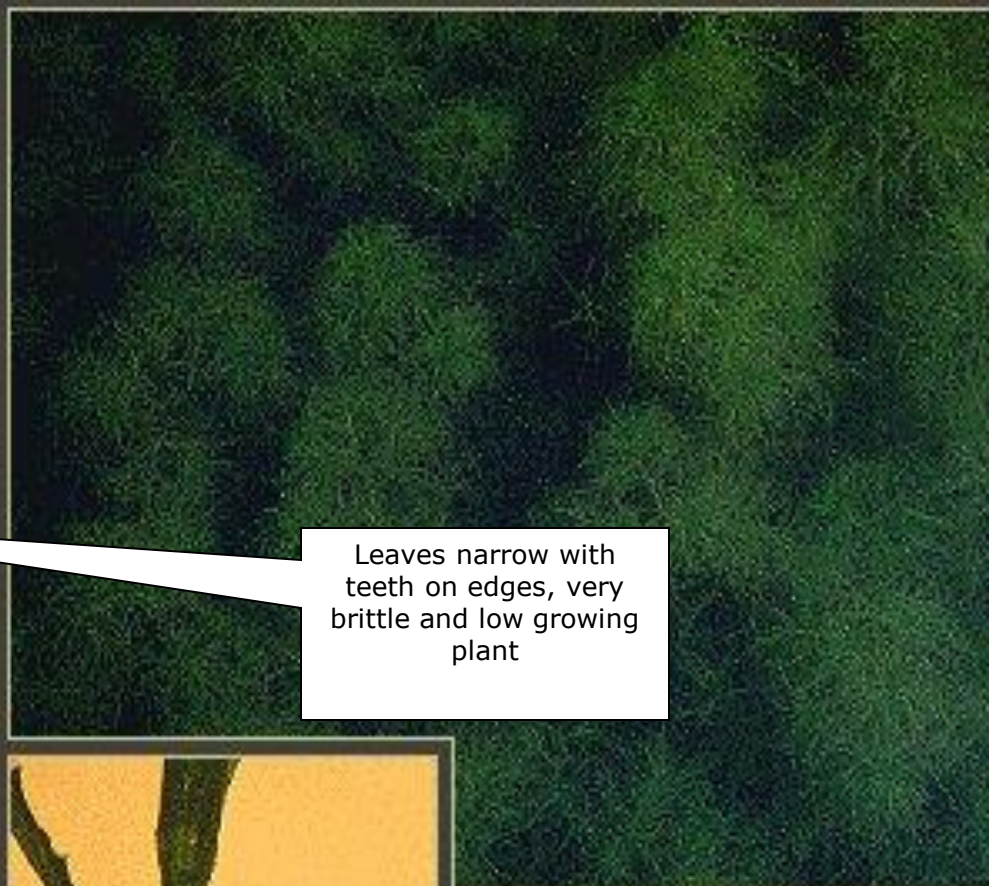


Curly-leaf Pondweed



Leaves are narrow with wavy (lasagna noodle) like edges to them, crisp like lettuce

Water Naiad



Leaves narrow with teeth on edges, very brittle and low growing plant





Stalks of small purple flowers form in July and persist until September. One plant can produce up to 2.5 million seeds.

Leaves opposite or whorled on a square stiff stem, rooted in moist, not wet or standing water soils

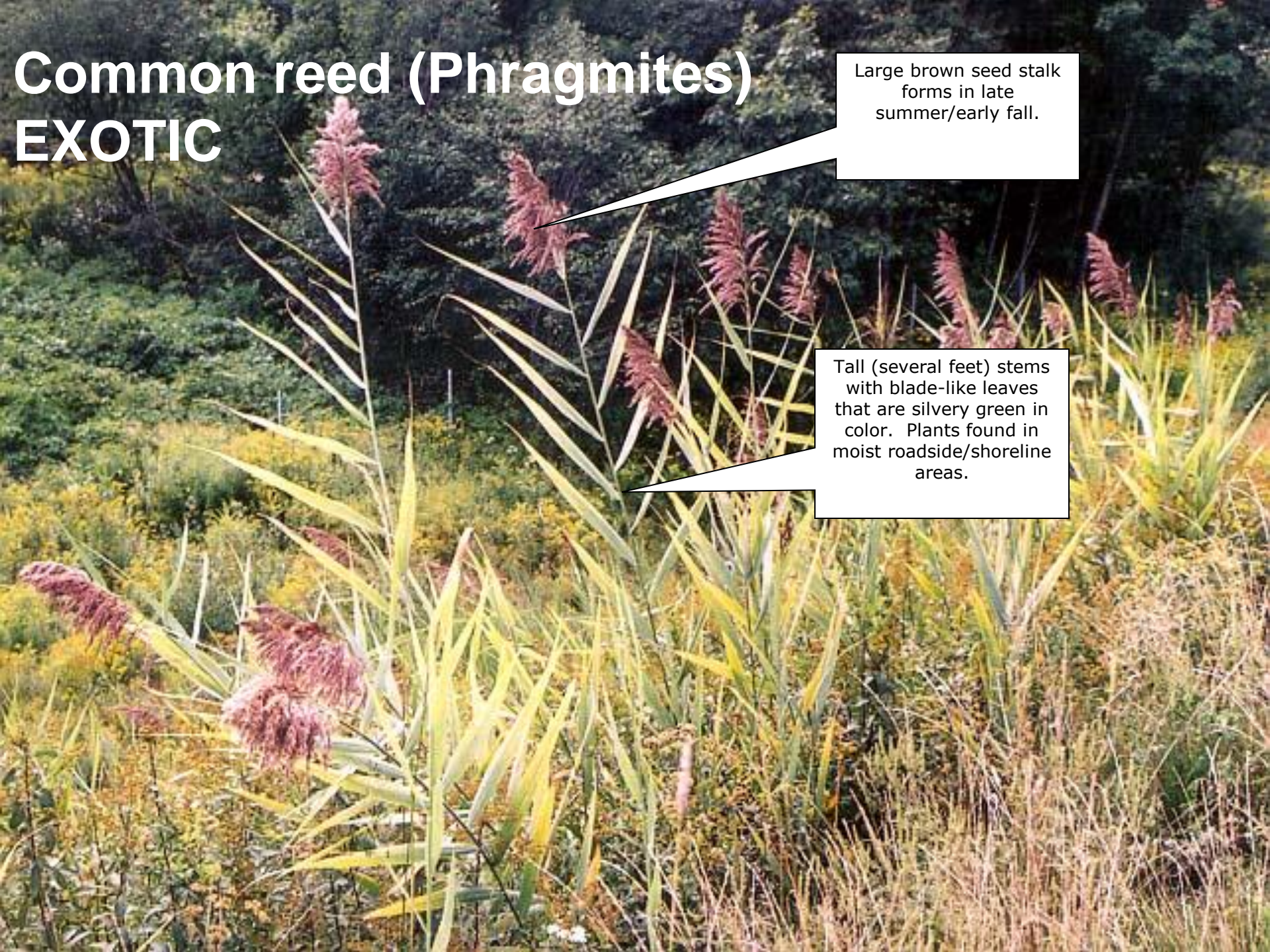
Purple loosestrife (EXOTIC)

Common reed (Phragmites)

EXOTIC


Large brown seed stalk forms in late summer/early fall.

Tall (several feet) stems with blade-like leaves that are silvery green in color. Plants found in moist roadside/shoreline areas.





Yellow iris (EXOTIC)



Invasive Aquatic Animals

(aka- critters you don't want)

Report any sightings of these to:

Amy P. Smagula

NH DES

29 Hazen Drive

Concord, NH 03301

Amy.Smagula@des.nh.gov

603-271-2248

Asian Clam



Roughly the diameter of a dime,
sometimes a quarter



Chinese Mystery Snail



Zebra Mussel



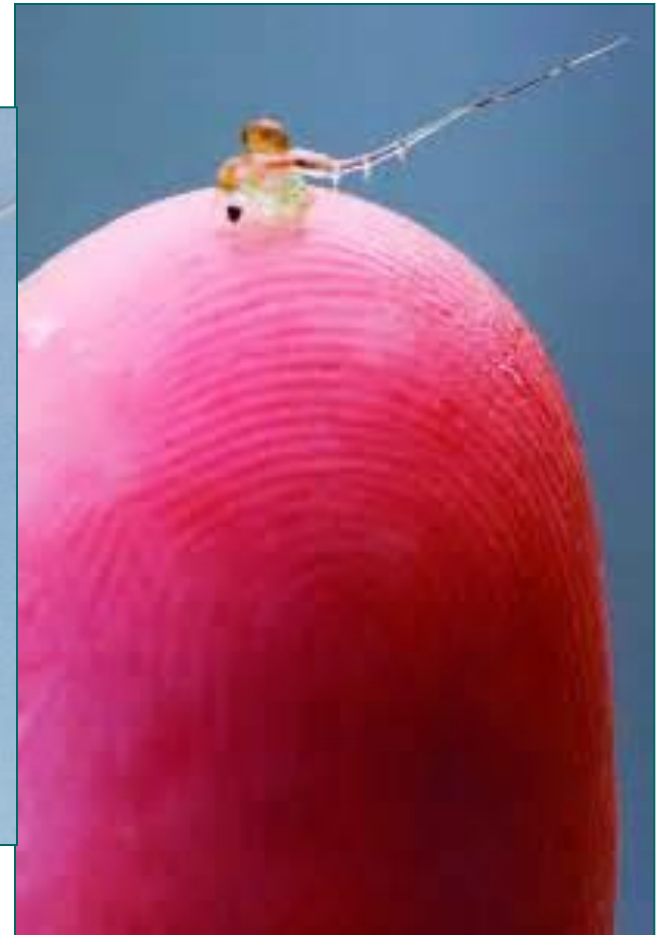
Roughly the size of a pistachio nut



Spiny Water Flea



Several spiny water fleas on fishing line



Spiny water flea on fingertip

Please...

When in doubt about an identification, please send in voucher specimens or email photos of what you have to Amy.Smagula@des.nh.gov for proper identification.